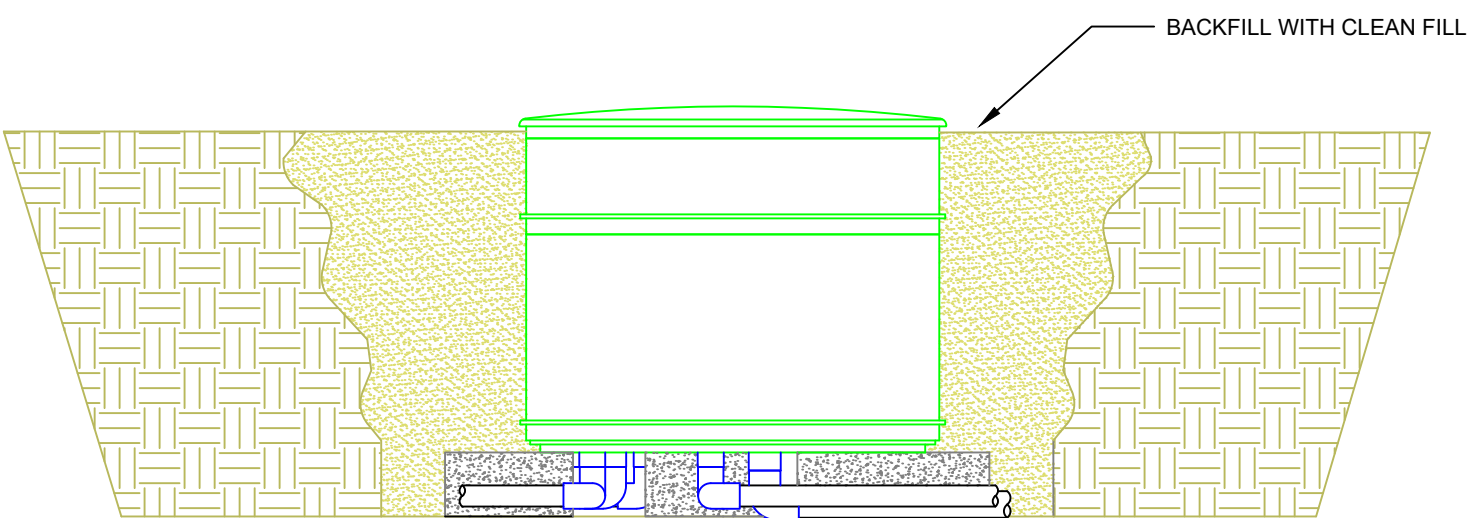
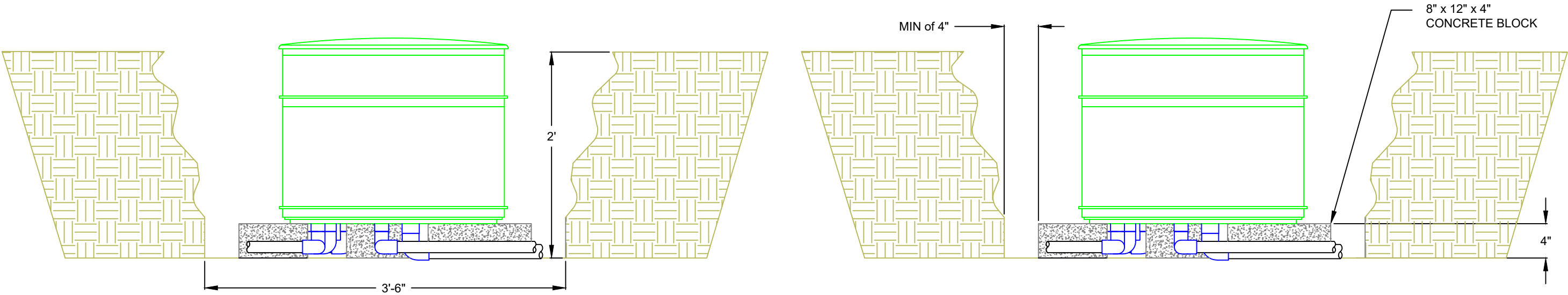
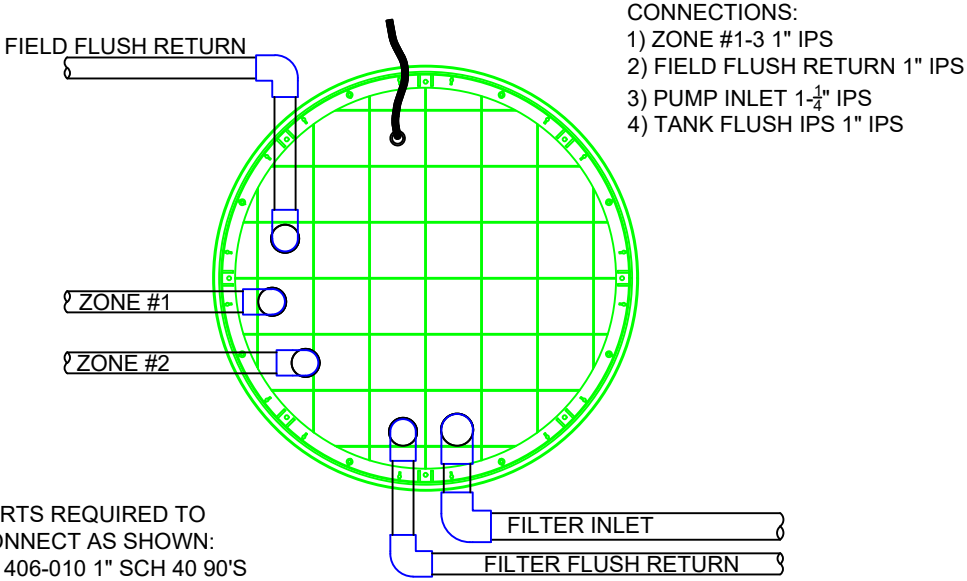


# ACT-100S RR OFF TANK SERIES HEADWORKS



WIRE CONNECTION

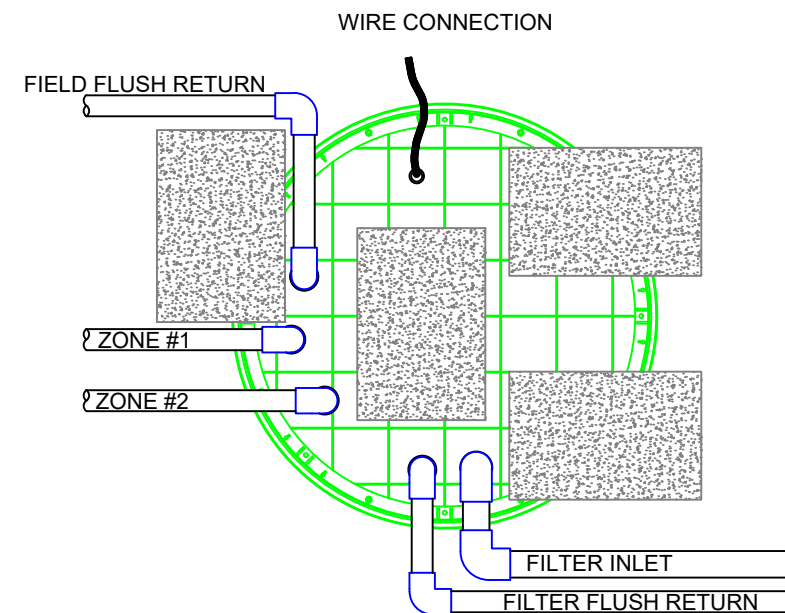
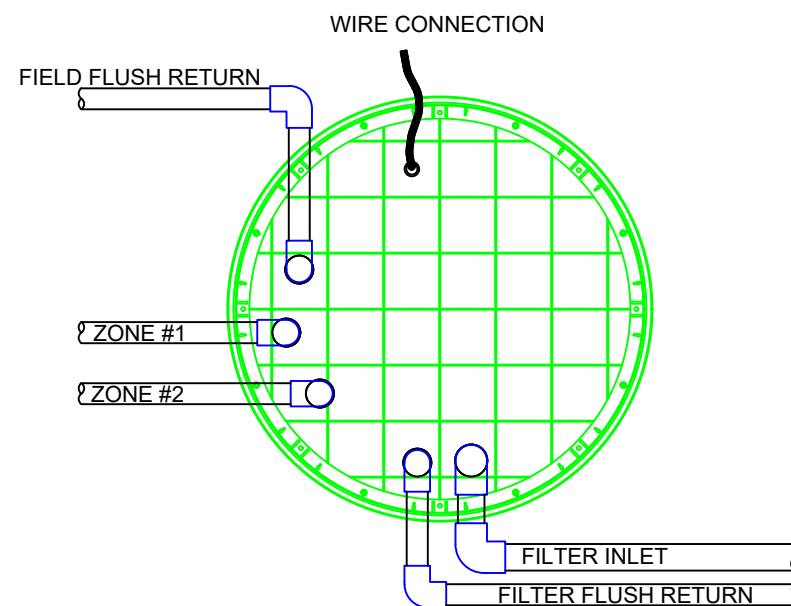
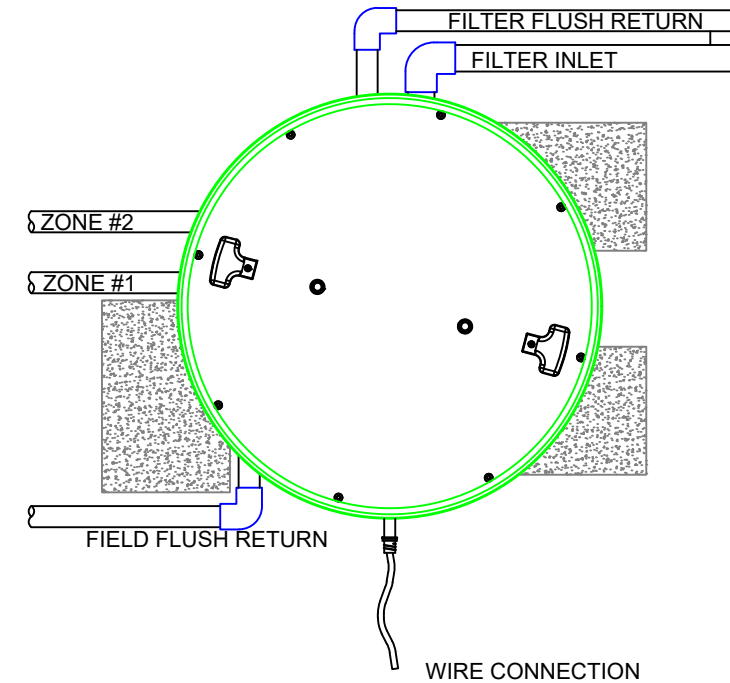
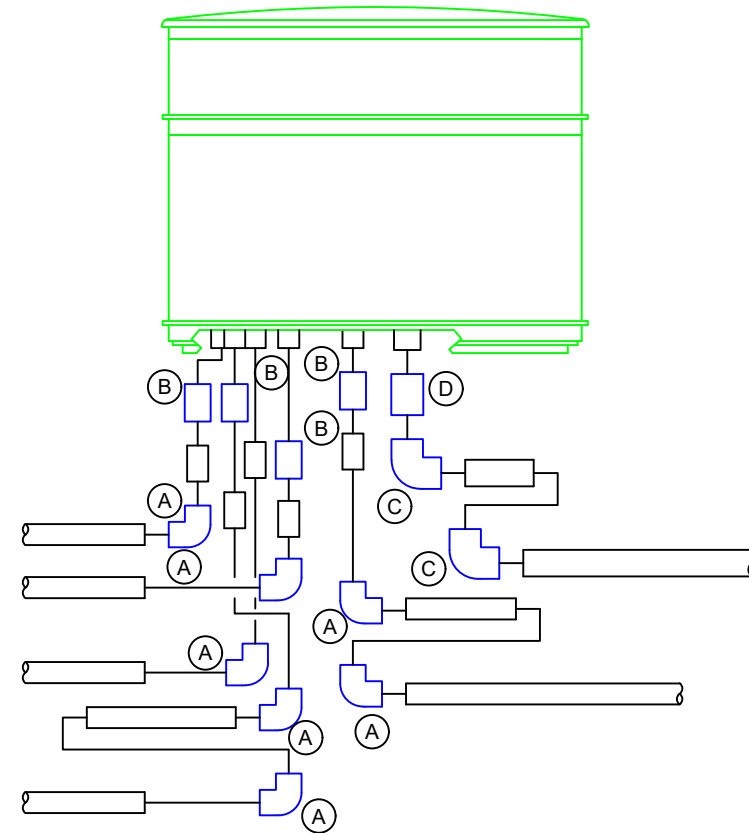


PARTS REQUIRED TO  
CONNECT AS SHOWN:  
7 \* 406-010 1" SCH 40 90'S  
5 \* 429-010 1" SCH 40 COUPLERS  
2 \* 406-012 1-1/4" SCH 40 90'S  
1 \* 429-012 1-1/4" SCH 40 COUPLERS  
SCH 40 1" AND 1-1/4" PIPE AS REQUIRED

1 TYPICAL INSTALLATION AND PIPING DETAIL  
SCALE: 1" = 12"

# ACT-100S RR OFF TANK SERIES HEADWORKS

PARTS REQUIRED TO  
CONNECT AS SHOWN:  
A - 406-010 1" SCH 40 90'S  
B - 429-010 1" SCH 40 COUPLERS  
C - 406-012 1-1/4" SCH 40 90'S  
D - 429-012 1-1/4" SCH 40 COUPLERS



# ACT-100S RR OFF TANK SERIES HEADWORKS

